

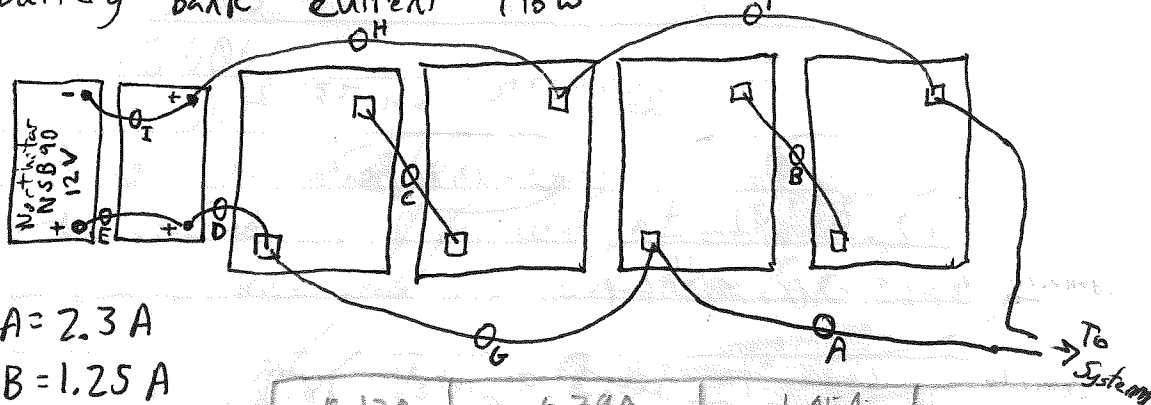
2015-8-19

ORV

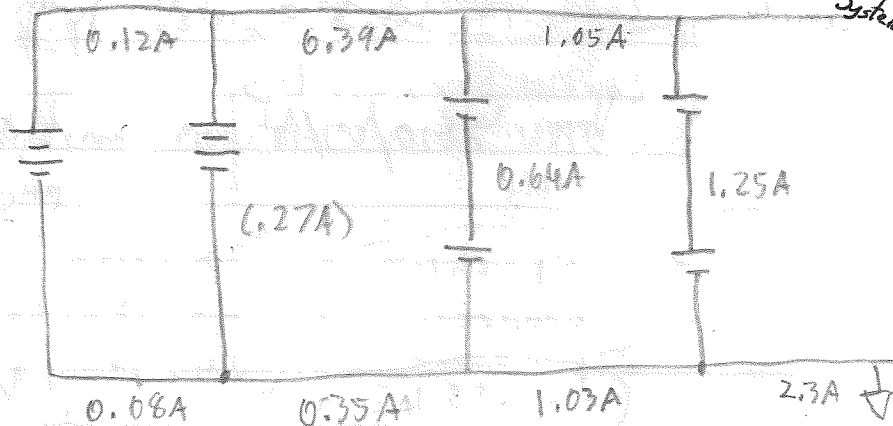
- QEP to vault
- Check batts (amp clamp)
- Align WiLAN antenna

- ✓ - Arrival at 7:45 am PT
- ✓ - Installed a grounding wire from the lightning arrester on the cell antenna to a ground rod found on site
 - one of the grounds from someone else's antenna was loosely in the grounding clamp
- ✓ - 8:38 am PT - Batt bank = 12.75V
- ✓ - Removed FRAD while on phone with Doug (sn 007245519; UC# 971006807) & FRAD power supply
- ✓ - Plugged Baler ethernet into switch
- ✓ - WiLAN antenna pointed at 230 T? GPS compass
- ✓ - cell modem antenna pointed @ S T? ~~GPS~~ GPS

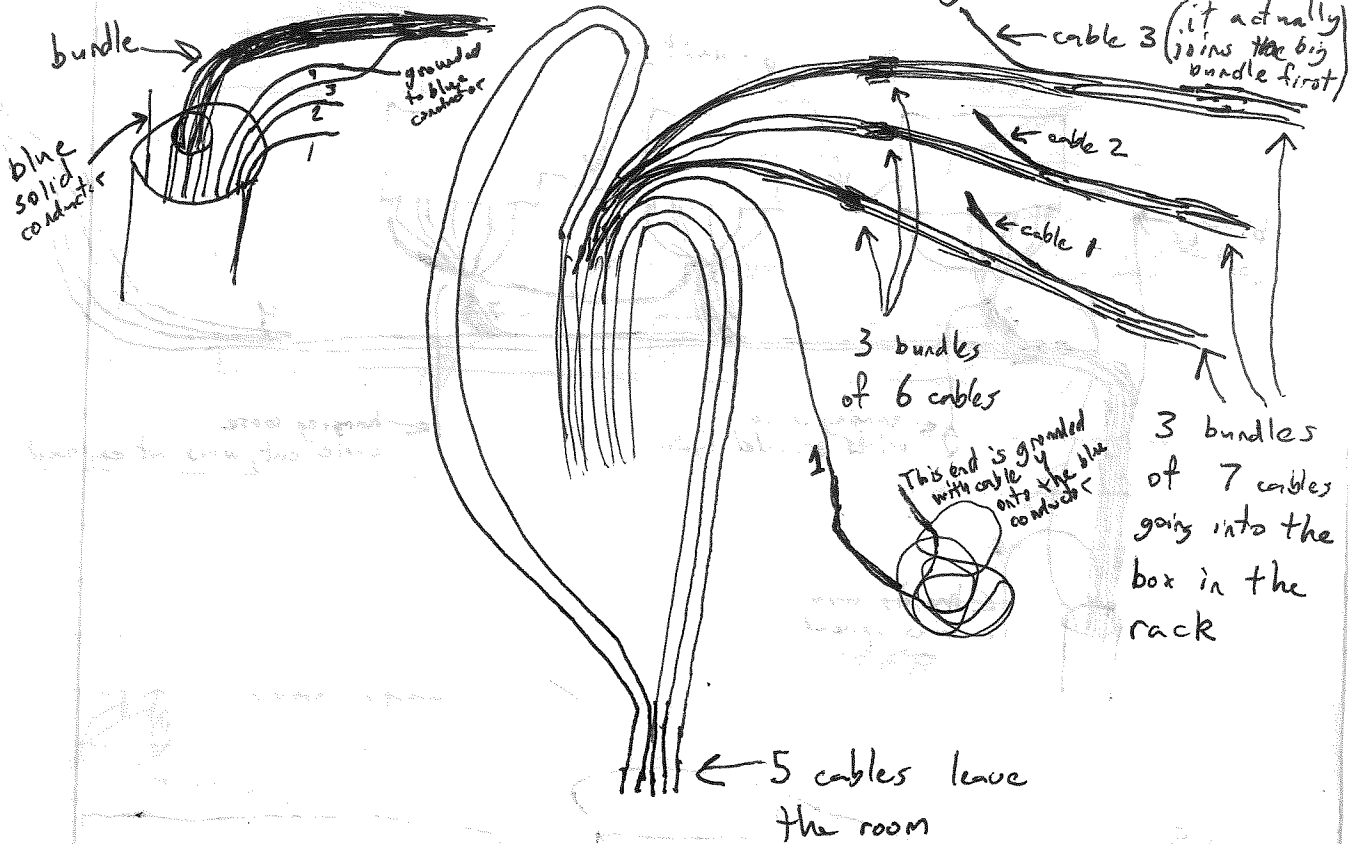
- Battery bank current flow checked \approx 8:30



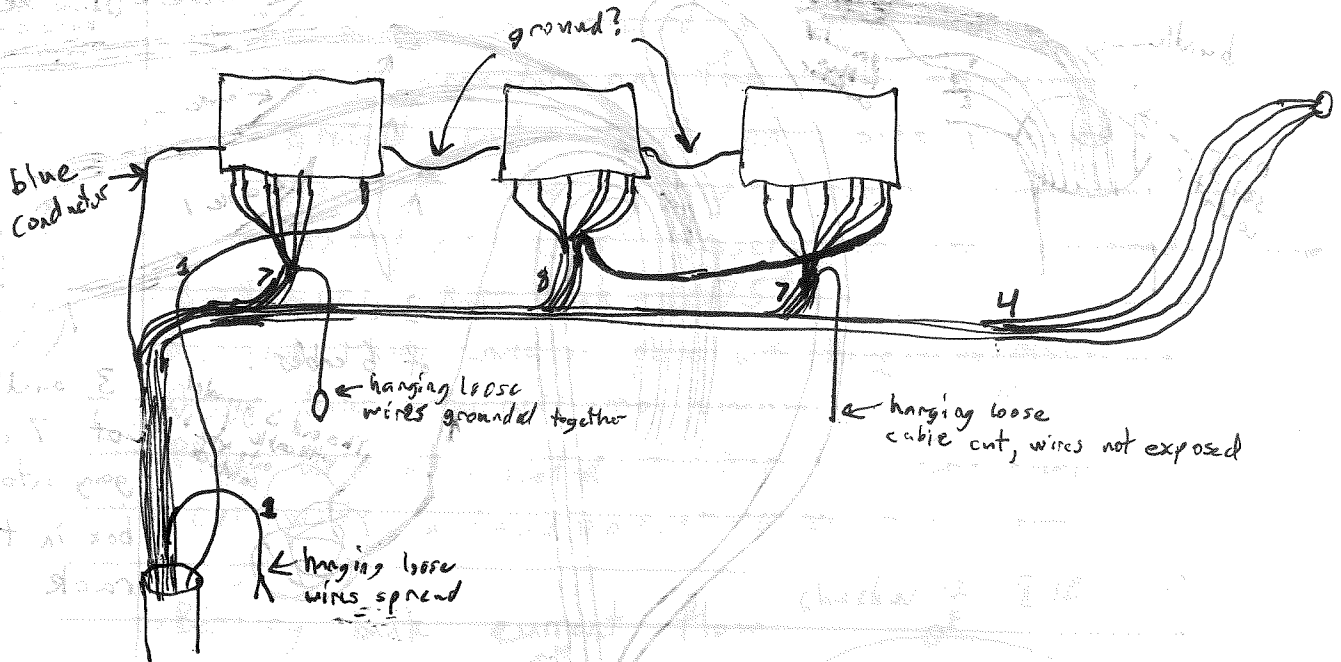
- A = 2.3 A
- B = 1.25 A
- C = 0.64 A
- D = 0.35 A
- E = 0.08 A
- F = 1.05 A
- G = 1.03 A
- H = 0.39 A
- I = 0.12



- Checking wires between vault & building



- Cable bundle in vault



4:55

cut open

10:06

cut open

10:15

one roll of quarters placed on at 10:14 am

10:34

quarters moved to

10:52

removed quarters from

~~11:06~~

11:07 departed and locked door to vault

