



# **EasyMP Slide Converter Operation Guide**



## Overview of EasyMP Slide Converter

---

<b>EasyMP Slide Converter Summary</b> .....	<b>4</b>
Supported File Types for EasyMP Slide Converter .....	4
<b>Installing the Software</b> .....	<b>5</b>
Software Requirements .....	5
Installing .....	5

## Converting PowerPoint Files into Scenarios

---

<b>Converting a PowerPoint File</b> .....	<b>7</b>
Scenario Conversion Procedure .....	7
Explanation of the Main Screen .....	7
Converting to a Scenario .....	8
Converting Directly from a PowerPoint File to a Scenario .....	10
<b>Checking and Making Settings for the Scenario</b> .....	<b>12</b>
Previewing a Scenario .....	12
Saving a Scenario to a USB Storage Device .....	12
Editing AutoRun .....	12
Changing Settings .....	13

## Appendix

---

<b>Uninstalling the Software</b> .....	<b>16</b>
<b>EasyMP Slide Converter Limitations</b> .....	<b>17</b>
Limitations Regarding OS .....	17
Limitations Regarding PowerPoint .....	17
Limitations Regarding Resolution .....	17
Other Limitations .....	17
<b>Troubleshooting</b> .....	<b>18</b>
Error Message when Starting Up EasyMP Slide Converter .....	18
Problems Concerning EasyMP Slide Converter .....	19
<b>Convert to FSE</b> is not displayed in the PowerPoint right click menu... ..	19
Cannot convert to a scenario .....	19
Cannot play scenarios .....	19
<b>Notices</b> .....	<b>20</b>
Copyright Notice .....	20
About Notations .....	20
Trademarks .....	20

# Overview of EasyMP Slide Converter

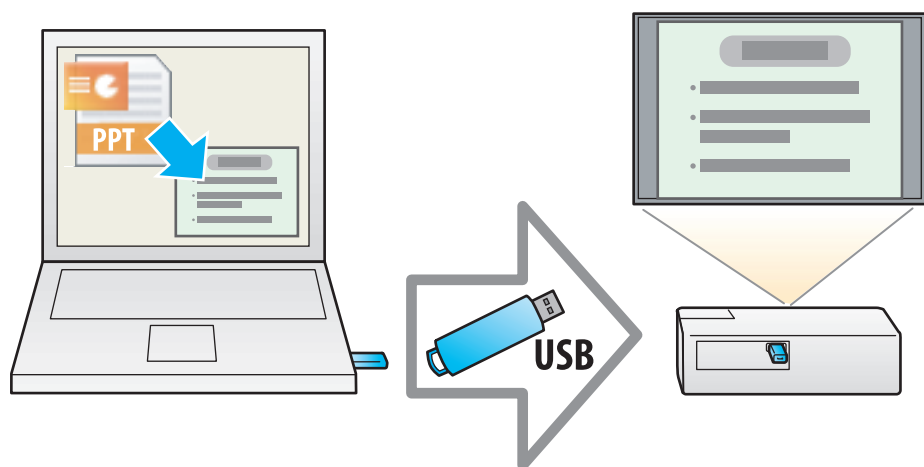
This chapter explains how to convert files using EasyMP Slide Converter and how to install the software.

## EasyMP Slide Converter Summary

EasyMP Slide Converter is a software that allows you to perform a slide show using a projector without connecting to a computer.

To play a slide show without a computer, convert the PowerPoint file into a scenario file using EasyMP Slide Converter.

Transfer the converted scenarios to a USB storage device and install it in the projector. You can then play the slide show with the projector's feature, Slideshow or PC Free.



For more information on Slideshow or PC Free, see the documentation supplied with your projector.

## Supported File Types for EasyMP Slide Converter

In EasyMP Slide Converter, files created with Microsoft PowerPoint 2002/2003/2007 (extensions .ppt/.pps/.pptx) can be converted into scenarios.

The following two types of scenarios are available.

FSE files	Scenarios that keep slide show animations or effects set in the PowerPoint file.
SIT files	Scenarios created by simplified conversion. Each slide is converted into a JPEG file. Animation effects set in the PowerPoint file are not saved.

For more information on the file format and conversion method, see the following section.

☛ "Changing Settings" [p.13](#)

## Installing the Software

You can find EasyMP Slide Converter on the EPSON Projector Software CD-ROM. Install the software on the computer you are using.

## Software Requirements

EasyMP Slide Converter runs on computers that meet the following requirements.

OS	Windows 2000 Professional Service Pack 4 The following 32 bit OS versions: Windows XP Service Pack 2 or later (Home Edition/Professional) Windows Vista Service Pack 1 or later (Except for Starter Edition) Windows 7
CPU	Pentium M 1.6GHz or faster
Amount of Memory	512MB or more
Hard Disk Space	50MB or more*
Display	Resolution greater than XGA (1024x768) 16 bit/32 bit full color display
PowerPoint	Microsoft Office PowerPoint 2002 Microsoft Office PowerPoint 2003 Microsoft Office PowerPoint 2007

\* Free space required for installation. The free space required may vary depending on the kind or the number of animations set in the PowerPoint files that are being converted.

## Installing

Make sure you check the following points before starting installation.

- You need administrator authority to install EasyMP Slide Converter.
- To install EasyMP Slide Converter, PowerPoint 2002 or later and Visual Basic for Applications (VBA) must be installed.
- Close all running applications before starting installation.
- When the language selected for the installation varies from that of the OS being used, the screens may not be displayed correctly.



### 1 Turn on your computer.



### 2 Insert the EPSON Projector Software CD-ROM into the computer.

The installer starts automatically.



If the installer does not start automatically, open the CD-ROM drive from **My Computer** (or **Computer**), and then double-click **InstallNavi**.



### 3 Follow the on-screen instructions to install.



You can download the latest version of EasyMP Slide Converter from the following Web site.

<http://www.epson.com/>

# Converting PowerPoint Files into Scenarios

This chapter explains how to convert a PowerPoint file into a scenario, and how to transfer to a USB storage device.

## Converting a PowerPoint File

You can convert a PowerPoint file into a scenario to play a slide show without connecting to a computer.

## Scenario Conversion Procedure

Scenarios are converted using the following procedure.

- 1 **Start EasyMP Slide Converter, and select the PowerPoint file.**
- 2 **On the Set screen, make settings such as Save to, Conversion Mode, and Projector Resolution, and then convert to a scenario.**
- 3 **Preview the converted scenario (FSE file).**
- 4 **Copy the scenario to the USB storage device connected to the computer.**
- 5 **Set the AutoRun settings for scenarios.**

You can change the AutoRun settings after creating scenarios.



- To set automatic slide transition, set the **Advance slide** setting to **Automatically after** in PowerPoint.
- USB storage devices that incorporate security functions may not be available.

## Explanation of the Main Screen

Start EasyMP Slide Converter to display the Main screen. The functions for each button are described in the following table.



	Button Name	Explanation
1	Convert	Click to display the File Selection screen. Select a PowerPoint file and convert it to a scenario. ☛ "Converting to a Scenario" p.8
2	Preview	Click to display the File Selection screen. Select and preview the converted scenario (FSE file). ☛ "Previewing a Scenario" p.12
3	Copy to Memory	Click to display the File Selection screen. Select the file you want to copy to the USB storage device and then copy. ☛ "Saving a Scenario to a USB Storage Device" p.12
4	Edit AutoRun	Click to display the Edit AutoRun screen. Edit the playing order or continuous play settings for scenarios. ☛ "Editing AutoRun" p.12
5	Set	Click to display the Set screen. Make file settings such as Save to, Resolution, and Conversion Mode. ☛ "Changing Settings" p.13



When **After converting a file, copy it to memory** is enabled on the Set screen, you can make each setting by following the on-screen instructions. When disabled, make each setting from the Main screen.

## Converting to a Scenario

This section explains how to convert a scenario step-by-step.



If you do not need to change any settings, you can directly convert a PowerPoint file into a scenario.

☞ "Converting Directly from a PowerPoint File to a Scenario" p.10

1

**Click Start, select Programs (or All Programs), select EPSON Projector, and then click EasyMP Slide Converter.**

The EasyMP Slide Converter Main screen is displayed.

2

**Connect the USB storage device to the computer to save the scenario.**

3

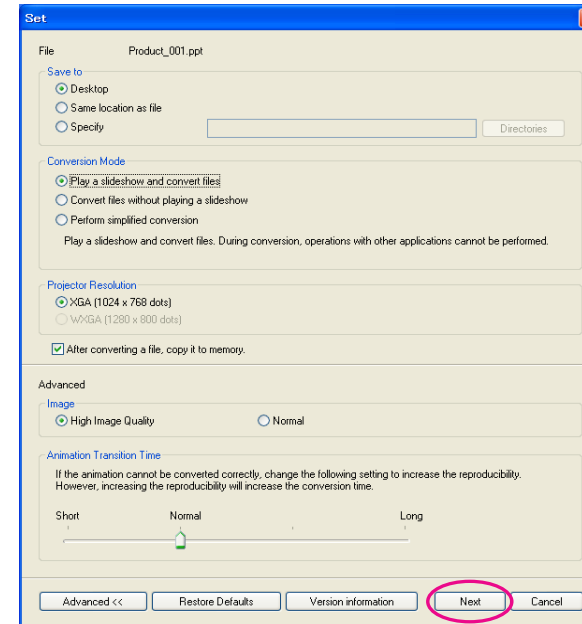
**Click Convert on the Main screen. Select the PowerPoint file to be converted into a scenario, and then click Select.**

4

**The Set screen is displayed. Make the necessary settings, and then click Next.**

For information on the settings, see the following section.

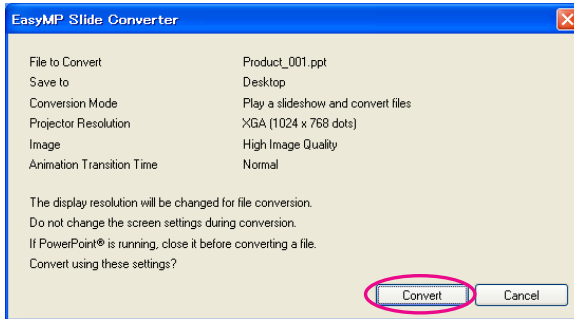
☞ "Changing Settings" p.13



- If **After converting a file, copy it to memory** is not selected, the Set screen is not displayed and the screen shown in procedure 5 is displayed.
- You can modify setting details by clicking the **Set** button on the Main screen.



## 5 Check the setting details, and then click Convert.

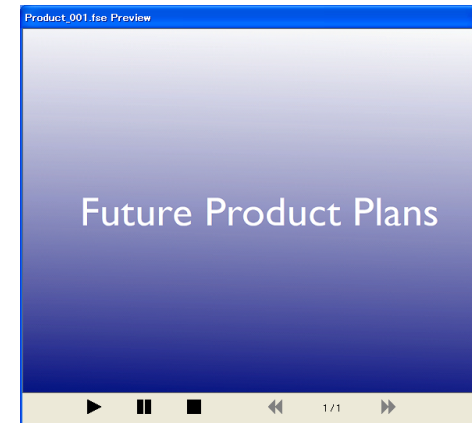


- When converting files while playing a slide show, it is automatically modified to use the screen's resolution depending on the projector's resolution (XGA or WXGA). After conversion, it returns to the previous screen resolution.
- If PowerPoint is running, the conversion process cannot be performed. Close PowerPoint before starting conversion. Also, do not start PowerPoint during conversion.
- During conversion, do not modify the display setup such as changing the resolution or connecting an external monitor. If the display setup is changed, conversion is canceled.
- If **After converting a file, copy it to memory** is not selected on the Set screen, the screens from procedure 6 are not displayed. When the Main screen is displayed, preview a scenario or copy to memory by using the appropriate buttons on the Main screen.

## 6 When the Preview confirmation screen is displayed after conversion is complete, click Yes. If you do not want to view the Preview, click No and go to procedure 7.

The Preview screen is displayed. For information on the functions of each button, see the following section.

☞ "Previewing a Scenario" p.12



When the preview has finished, close the Preview screen.



Jpeg (SIT) files cannot be previewed with the Preview function. When **Perform simplified conversion** is selected from Conversion Mode, the Copy confirmation screen is displayed but the Preview confirmation screen is not displayed.



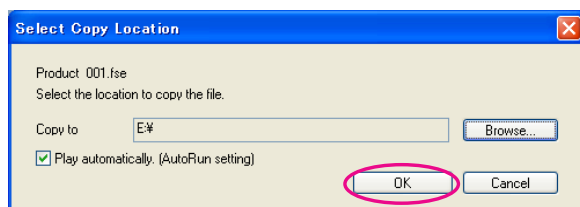
## 7 When the Copy confirmation screen is displayed, click Yes.

- 8** The Select Copy Location screen is displayed. Click Browse to select the drive where the USB storage device is connected. Then, click OK.

To edit the playing order or continuous play settings for scenarios, select **Play automatically. (AutoRun setting)**.

You can also make AutoRun settings after conversion is complete.

☞ "Editing AutoRun" p.12



The scenario is transferred to the selected destination.

- 9** Set AutoRun.

- When there is no AutoRun file in the USB storage device:  
The Continuous Play confirmation screen is displayed. When you want to create an AutoRun file and set the Continuous Play setting for the AutoRun file to On, click **Yes**.
- When there is an AutoRun file in the USB storage device:  
See the following section to set AutoRun, and then click **OK**.

☞ "Editing AutoRun" p.12



If there are two or more files set for AutoRun, they are played back in order from the top of the AutoRun File List.

- 10** Remove the USB storage device from the computer.

See the computer's documentation for the removal method.

- 11** After finishing transferring your scenario, connect the USB storage device to the projector and start projection using Slideshow or PC Free.

For more information on Slideshow or PC Free, see the documentation supplied with your projector.

## Converting Directly from a PowerPoint File to a Scenario

This section explains how to convert directly from a PowerPoint file to a scenario.



This is useful when you want to convert without modifying any settings. Because the settings from the Set screen are reflected during conversion, check the settings beforehand when **After converting a file, copy it to memory** is not selected.

- 1** Drag & drop the PowerPoint file icon to the EasyMP Slide Converter icon on the desktop.

Or, right-click the PowerPoint file icon and select **Convert to FSE**. Note that it is not possible to convert multiple PowerPoint files. Select only one file for conversion.

- 2** Convert the file.

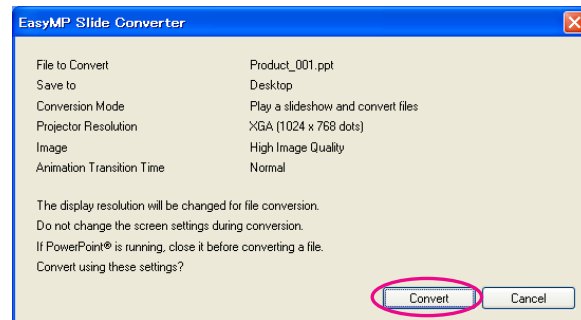
- When **After converting a file, copy it to memory** is selected:

The Set screen is displayed.

For information on the settings, see the following section.

☞ "Changing Settings" p.13

- When **After converting a file, copy it to memory** is not selected:  
The confirmation screen is displayed. Click **Convert**.



Converting the file to a scenario starts. When **Play a slideshow and convert files** is selected from Conversion Mode, the slide show is displayed.

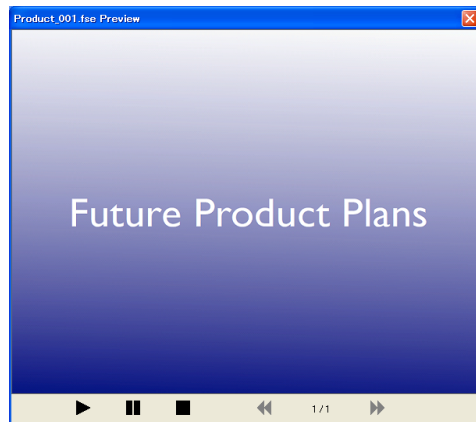
### **3** Preview the converted scenario, and then transfer it to a USB storage device.






- When **After converting a file, copy it to memory** is selected:
  - ☛ Go to procedure 6 of "[Converting to a Scenario](#)".
- When **After converting a file, copy it to memory** is not selected:  
The Main screen is displayed after conversion is complete.  
Then make settings such as scenario preview, copy to memory, and AutoRun.
  - ☛ "Explanation of the Main Screen" [p.7](#)

## Previewing a Scenario

You can check the scenario on the Preview screen after conversion. Click the **Preview** button on the Main screen to display the Preview screen.

For information on the functions for each button, see the following table.



 <b>Play</b>	Starts preview. Also, this restarts stopped or paused scenarios. If Animations in PowerPoint files are not played back automatically, Animations can be played back one after another by pressing the <b>Play</b> button.
 <b>Pause</b>	Pauses the preview.
 <b>Stop</b>	Stops playback and returns to the first slide.
 <b>Previous Slide</b>	Returns to the previous slide.
 <b>Next Slide</b>	Advances to the next slide.

## Saving a Scenario to a USB Storage Device

This section explains how to transfer a converted scenario to a USB storage device.

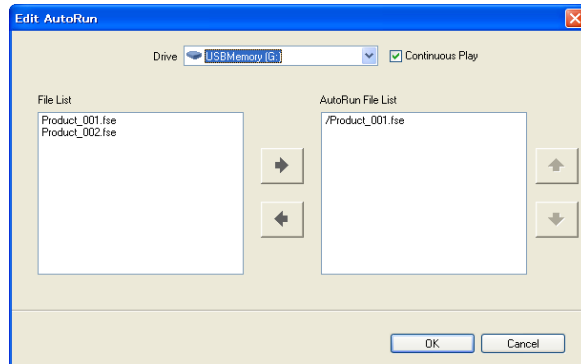
- 1 **Connect the USB storage device to the computer.**
- 2 **Start EasyMP Slide Converter.**
- 3 **Click the Copy to Memory button.**
- 4 **Follow the on-screen instructions to transfer the scenario.**





## Editing AutoRun

You can edit AutoRun to specify the playing order of the scenarios or to play the scenarios continuously.

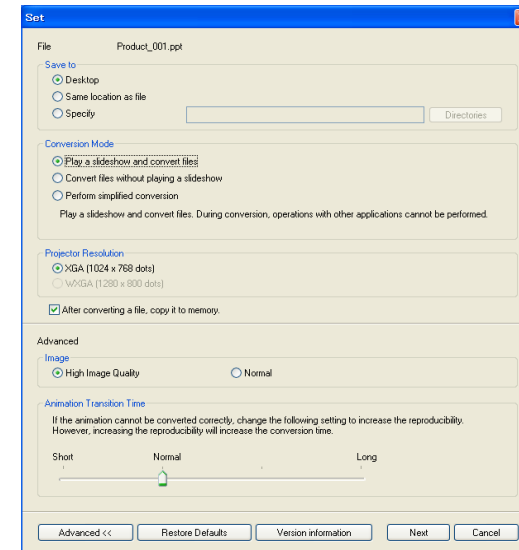
Click the **Edit AutoRun** button on the Main screen to display the Edit AutoRun screen.

To set AutoRun, see the following table.



<b>Drive</b>	Select the drive to edit the AutoRun file.
<b>Continuous Play</b>	To start projecting from the first scenario again once projection of all scenarios in the AutoRun File List is complete, select <b>Continuous Play</b> .
<b>File List</b>	A list of scenarios for which AutoRun is not set is displayed.
<b>AutoRun File List</b>	A list of scenarios for which AutoRun is set is displayed in playback order. Click the   buttons to change the order.
 	The scenario is registered and deleted in the AutoRun file.

For information on the settings, see the following table.



<b>File</b>	The file name for the PowerPoint file to be converted is displayed.
<b>Save to</b>	Select where to save the scenario.

## Changing Settings

Click the Set button on the Main screen to display the Set screen.

<p><b>Conversion Mode</b></p>	<p>Select the conversion method for the PowerPoint file.</p> <ul style="list-style-type: none"> <li>• <b>Play a slideshow and convert files</b> The slide show is displayed during conversion allowing you to check the slide show as it is converted. Cannot operate other applications during conversion. The file is saved in FSE format.</li> <li>• <b>Convert files without playing a slideshow</b> A slide show is not displayed during conversion. The effects set for the slides are not converted. The file is saved in FSE format.</li> <li>• <b>Perform simplified conversion</b> Convert to a JPEG file. Animation effects set in the PowerPoint file are not saved. The file is saved in SIT format.</li> </ul>
<p><b>Projector Resolution</b></p>	<p>Select the resolution for the projector that will project the scenario. Scenarios for which WXGA (1280 x 800 dots) has been set cannot be played back on XGA type projectors.</p>
<p><b>After converting a file, copy it to memory.</b> <b>Advanced</b></p>	<p>Select to follow the conversion procedure step-by-step. When selected, the Set screen is displayed each time a file is converted.</p> <p>Switch between show or hide for Advanced.</p>
<p><b>Restore Defaults</b></p>	<p>Changed settings are returned to their default values. Click <b>OK</b> to save the settings.</p>
<p><b>Version information</b></p>	<p>Display version information for the application.</p>

The following items are for Advanced.

<p><b>Image</b></p>	<p>Set the image quality for the converted file.</p> <p>When <b>Normal</b> is set, the file size is smaller compared to High Image Quality, but the image quality is degraded. <b>High Image Quality</b> is recommended.</p> <p>When <b>Perform simplified conversion</b> is selected from Conversion Mode, image quality cannot be set.</p>
<p><b>Animation Transition Time</b></p>	<p>Set the animation reproducibility (transition time) for the converted file.</p> <p>Animations for which timer or repeat are set may not be converted normally. If you cannot convert the animations correctly, set a longer transition time to increase the reproducibility.</p> <p>When <b>Perform simplified conversion</b> is selected from Conversion Mode, a transition time cannot be set.</p>



# Appendix

## Uninstalling the Software

Make sure you check the following points before starting uninstallation.

- You need administrator authority to uninstall EasyMP Slide Converter.
- Close all running applications before starting uninstallation.

### For Windows 2000

- 1 **Click Start, select Settings, and then click Control Panel.**
- 2 **Double-click Add/Remove Programs.**
- 3 **Click Change or remove a program.**
- 4 **Select EasyMP Slide Converter, and then click Change/Remove.**

### For Windows XP

- 1 **Click Start, and then click Control Panel.**
- 2 **Double-click Add or Remove Programs.**
- 3 **Select EasyMP Slide Converter, and then click Change/Remove.**

### For Windows Vista/Windows 7

- 1 **Click Start, and then Control Panel.**
- 2 **Click Uninstall a program from the Program category.**
- 3 **Select EasyMP Slide Converter, and then click Uninstall/Change.**



## EasyMP Slide Converter Limitations

When using EasyMP Slide Converter, the following restrictions apply.

---

## Limitations Regarding OS

- If you are using Windows XP Service Pack 2, the program may terminate suddenly when you select a PowerPoint file on the desktop. In order to resolve this issue, either update to Windows XP Service Pack 3 or contact Epson.
- In Windows 2000, you cannot select **Convert files without playing a slideshow** from Conversion Mode.
- If any windows such as the Windows Task Manager are being displayed in front, first close the windows and then perform conversion.

---

## Limitations Regarding PowerPoint

- When simplified conversion is performed using PowerPoint 2007 Service Pack 1, a portion of the image will be displayed as black after conversion. This issue will be resolved if you update to PowerPoint 2007 Service Pack 2.
- The effects of continuous play set in PowerPoint cannot be converted. In order to continuously play a file, set the **Continuous Play** setting in EasyMP Slide Converter.
  - ☛ "Converting a PowerPoint File" p.7
- When a PowerPoint file that is set so that slide switching or the start of animations are performed automatically is converted, the file may not be displayed or operated properly after conversion.
- In PowerPoint 2002 or PowerPoint 2003, some objects on the slide show may not be displayed correctly or a portion of the image may be displayed as black after conversion.

- If you are using Windows Vista or Windows 7, PowerPoint 2002 is not supported.
- Cannot convert audio and movies in PowerPoint files or animations such as PowerPoint Game.

---

## Limitations Regarding Resolution

- If the resolution for the computer being used does not have 1280x800 or 1280x768 settings, and **Play a slideshow and convert files** is selected, you cannot select WXGA for the Projector Resolution.

---

## Other Limitations

- Effects set for the first slide cannot be converted regardless of the Conversion Mode.
- When **Convert files without playing a slideshow** is selected, screen switching effects cannot be converted.
- Applications that use part of DirectX functions may not be displayed correctly.

## Error Message when Starting Up EasyMP Slide Converter

Error Messages	Remedy
The application cannot be used with your OS version. Update your OS to the required version.	EasyMP Slide Converter cannot be installed under the OS being used. Install under a supported OS. ☛ "Software Requirements" <a href="#">p.5</a>
To use EasyMP Slide Converter, PowerPoint® 2002 or a later version must be installed.	Reinstall EasyMP Slide Converter after installing PowerPoint 2002 or later. ☛ "Installing the Software" <a href="#">p.5</a>
Close PowerPoint®, then convert the file.	When PowerPoint is running, the conversion process may not complete normally. Close PowerPoint, then convert the file.
The file cannot be saved to the specified location. Specify another location and try again.	There are times when you may not be able to save a file such as if you do not have write access to the specified folder. Specify another location and try again.
The file could not be copied to the specified location. Specify another location and try again.	
There is not enough available space in the specified location. Specify another location and try again.	There is insufficient space on the specified drive to save the file. Make space in the drive so that the file can be saved by deleting any unnecessary files.
The file cannot be copied because there is not enough available space in the specified drive.	There is insufficient free space on the specified drive to transfer the scenario. Make space in the drive so that the scenario can be sent by deleting any unnecessary files.
This file cannot be written to the specified location because there is not enough available space.	There is insufficient free space on the specified drive to set AutoRun. Make space so that the file can be written by deleting any unnecessary files.

## Problems Concerning EasyMP Slide Converter

### Convert to FSE is not displayed in the PowerPoint right click menu.

Check	Remedy
Was PowerPoint installed after installing EasyMP Slide Converter?	The menu may not be displayed, if PowerPoint is installed after installing EasyMP Slide Converter. Reinstall EasyMP Slide Converter.

### Cannot convert to a scenario.

Check	Remedy
Is PowerPoint running?	Close PowerPoint before starting conversion. Also, do not start PowerPoint during conversion.
Was Slides or Custom Show set as the Slide View setting?	You cannot convert when Slides or Custom Show is set as the Slide View setting. Select All as the Slide View.

### Cannot play scenarios.

Check	Remedy
Is the correct resolution selected?	When the resolution of the projector that is projecting the scenario is XGA type, scenarios for which WXGA (1280 x 800 dots) is set cannot be played back. Project after converting the PowerPoint file to an XGA (1024 x 768 dots) scenario file.

## Notices

---

## Copyright Notice

All rights reserved. No part of this publication may be reproduced, stored in a retrieval system, or transmitted in any form or by any means, electronic, mechanical, photocopying, recording, or otherwise, without the prior written permission of Seiko Epson Corporation. No patent liability is assumed with respect to the use of the information contained herein. Neither is any liability assumed for damages resulting from the use of the information contained herein.

Neither Seiko Epson Corporation nor its affiliates shall be liable to the purchaser of this product or third parties for damages, losses, costs, or expenses incurred by the purchaser or third parties as a result of: accident, misuse, or abuse of this product or unauthorized modifications, repairs, or alterations to this product, or (excluding the U.S.) failure to strictly comply with Seiko Epson Corporation's operating and maintenance instructions.

Seiko Epson Corporation shall not be liable against any damages or problems arising from the use of any options or any consumable products other than those designated as Original Epson Products or Epson Approved Products by Seiko Epson Corporation.

This information is subject to change without notice.

Illustrations in this guide may differ from the actual projector.

---

## About Notations

Microsoft® Windows® 2000 operating system

Microsoft® Windows® XP Professional operating system

Microsoft® Windows® XP Home Edition operating system

Microsoft® Windows Vista® operating system

Microsoft® Windows® 7 operating system

In this guide, the operating systems above are referred to as "Windows 2000", "Windows XP", "Windows Vista", and "Windows 7". Furthermore, the collective term Windows may be used to refer to Windows 2000, Windows XP, Windows Vista, and Windows 7, and multiple versions of Windows may be referred to as, for example, Windows 2000/XP/Vista, with the Windows notation omitted.

---

## Trademarks

IBM, DOS/V, and XGA are trademarks or registered trademarks of International Business Machines Corporation.

Microsoft, Windows, WindowsNT, Windows Vista, Windows 7, PowerPoint, and Windows logo are trademarks or registered trademarks of Microsoft Corporation in the United States and/or other countries.

Other product names used herein are also for identification purposes only and may be trademarks of their respective owners. Epson disclaims any and all rights in those marks.

### Software Copyright:

This product uses free software as well as software to which this company holds the rights.

© 2010 Epson America, Inc.

07/10

CPD-28083